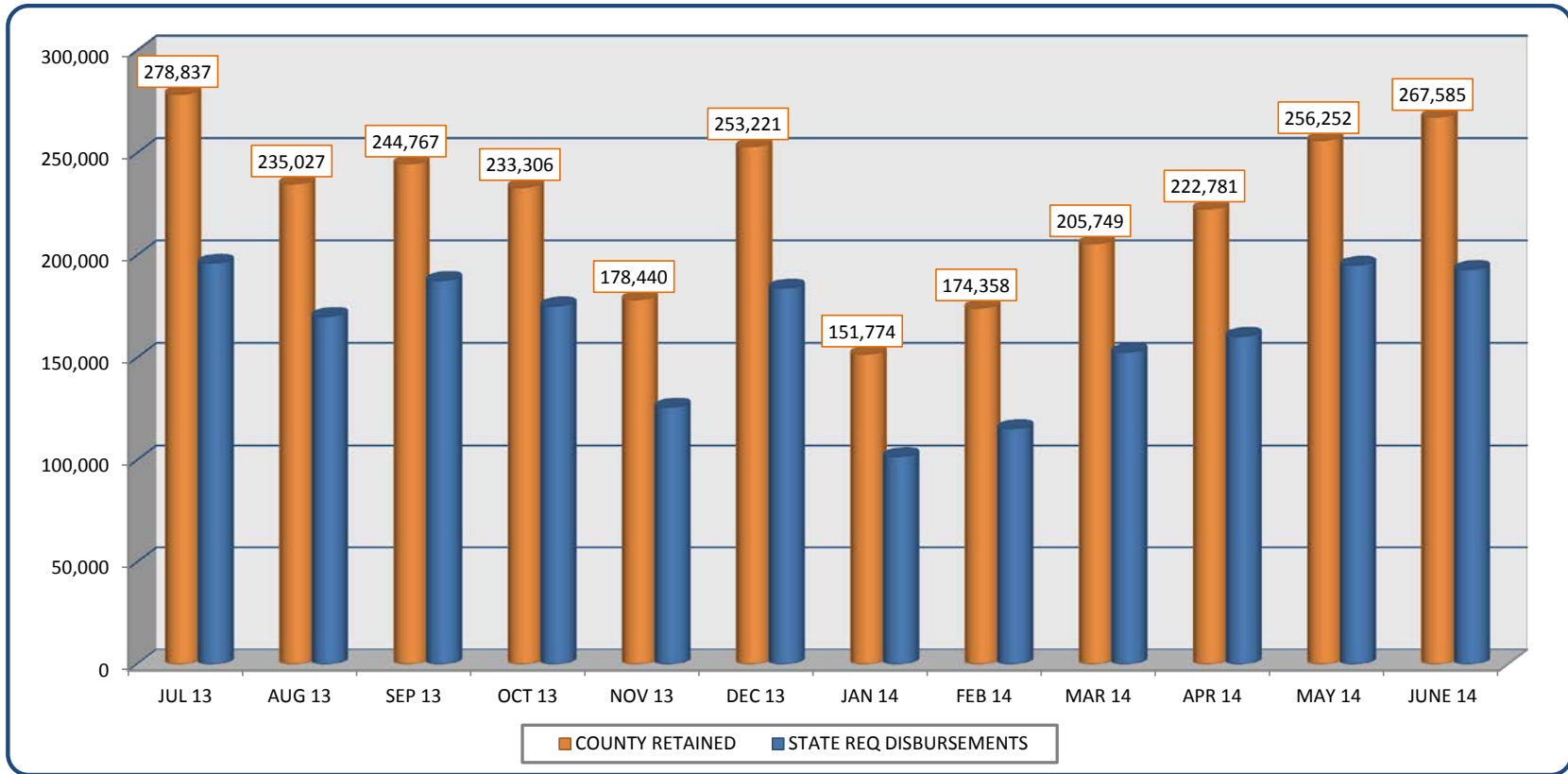


**FY 13-14 FEES COLLECTED BY REGISTER OF DEEDS**

	JUL 13	AUG 13	SEP 13	OCT 13	NOV 13	DEC 13	JAN 14	FEB 14	MAR 14	APR 14	MAY 14	JUNE 14
<sup>1</sup> COUNTY RETAINED	278,837	235,027	244,767	233,306	178,440	253,221	151,774	174,358	205,749	222,781	256,252	267,585
STATE REQ DISBURSEMENTS	196,273	170,265	187,768	175,354	125,927	184,102	101,783	115,455	152,808	160,512	195,272	193,156
<b>TOTAL COLLECTED</b>	<b>475,110</b>	<b>405,290</b>	<b>432,535</b>	<b>408,660</b>	<b>304,367</b>	<b>437,323</b>	<b>253,558</b>	<b>289,813</b>	<b>358,557</b>	<b>383,293</b>	<b>451,524</b>	<b>460,741</b>

**FY 13-14 TOTAL REGISTER OF DEEDS FEES RETAINED BY COUNTY AND STATE REQUIRED DISTRIBUTIONS**



<sup>1</sup> County Retained - Net receipts after deductions for funds remitted to state, AEPF, or other required distributions